

www.BoschProHVAC.com

End User Login and Support Guide

© Bosch Thermotechnology 2017

BoschProHVAC : Logging In

HOME HOMEOWNERS + PRODUCTS LOCATOR TRAINING BLOG SUPPORT

boschprohvac

BOSCH
Invented for life

Welcome to our mobile-friendly online portal supporting professional installers and wholesale suppliers of Bosch and Buderus HVAC products and accessories.

Account Tools
Log into your account to register products.
Login
Don't have an account?
Account Signup

Find a Contractor Near You
Search Our Dealer Locator Now
ABC
Authorized Bosch Contractor

Training for Professionals
Our hands-on training classes are offered in our facility classrooms and on the road.
Training Calendar

Back to Top | Print
Login | Privacy Policy | Terms and Conditions | Contact Us | Request Login | Password Reset

To log in to your account, visit www.BoschProHVAC.com and click “Login” from the menu at the top. Enter the email you used to create the account and the password you chose during the account creation process.

Join Bosch today. Register Your Products.
If you're not a current member, please register now to take full advantage of your benefits!

Create a New Account
I'm a new user and I would like to create an account to register my product(s).

FIRST NAME LAST NAME
EMAIL ADDRESS
EMAIL ADDRESS

Account Type:
 Product / Home Owner Contractor Other
Continue

Log into your Account
Log into your account to view personal information and register your product(s).

EMAIL ADDRESS
PASSWORD
Login [Forgot Password?](#)

BoschProHVAC : Resetting your Password

HOME HOMEOWNERS + PRODUCTS LOCATOR TRAINING BLOG SUPPORT

boschprohvac Login

BOSCH
Invented for life

Welcome to our mobile-friendly online portal supporting professional installers and wholesale suppliers of Bosch and Buderus HVAC products and accessories.

Account Tools
Log into your account to register products
[Login](#)
Don't have an account?
[Account Signup](#)

Find a Contractor Near You
Search Our Dealer Locator Now! **ABC**
Authorized Bosch Contractor

Training for Professionals
Our hands-on training classes are offered in our facility classrooms and on the road.
[Training Calendar](#)

Back to Top | Print
[Login](#) | [Privacy Policy](#) | [Terms and Conditions](#) | [Contact Us](#) | [Request Login](#) | [Password Reset](#)

If you forget your password and need to reset it, go to www.BoschProHVAC.com and click on “Password Reset” from the menu at the bottom of the page. Enter the email of the account you would like to reset and click “Get New Password.”

We will send you an email immediately.

Join Bosch today. Register Your Products.
If you're not a current member, please register now to take full advantage of your benefits!

Create a New Account
I'm a new user and I would like to create an account to register my product(s).

FIRST NAME LAST NAME
EMAIL ADDRESS

Account Type:
 Product / Home Owner Contractor Other

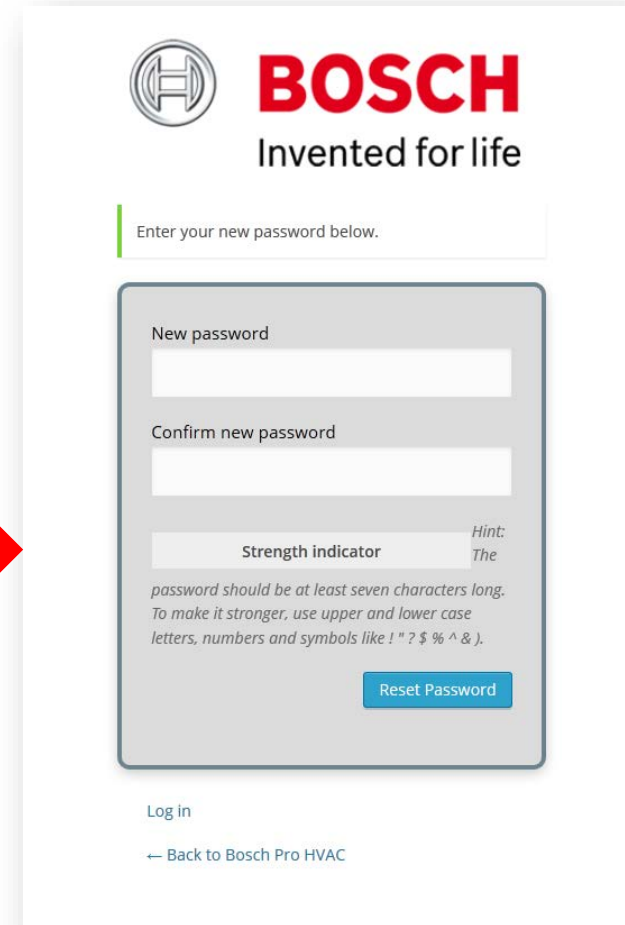
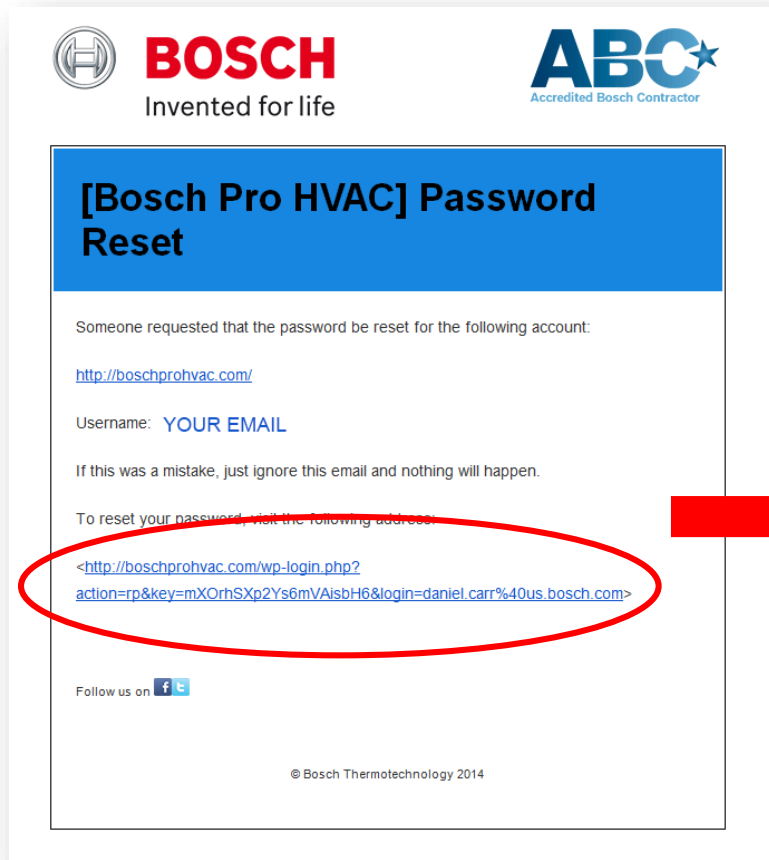
[Continue](#)

Log into your Account
Login into your account to view personal information and register your product(s).

EMAIL ADDRESS
PASSWORD

[Login](#) [Forgot Password?](#)

BoschProHVAC : Resetting Your Password (continued)




You'll receive an email with directions to reset your password. Click the link at the bottom of the email (circled above) and enter your new password, then login as you normally would.

BoschPro: Website Support When You Need it Most

The screenshot shows the top navigation bar of the BoschPro website. The 'SUPPORT' link is circled in red. Below the navigation bar, the website header includes the Bosch logo and the tagline 'Invented for life'. A welcome message states: 'Welcome to our mobile-friendly online portal supporting professional installers and wholesale suppliers of Bosch and Buderus HVAC products and accessories.' Below this, there are three main content blocks: 'Account Tools' with 'Login' and 'Account Signup' buttons; 'Find a Contractor Near You' with an 'ABC Accredited Bosch Contractor' logo and a 'Search Our Dealer Locator Now!' button; and 'Training for Professionals' with a 'Training Calendar' button.

The screenshot shows a support form titled 'We are here to help!'. The form asks the user to 'Please select your support option below, complete the form, and you will be contacted as soon as the next agent is available.' The form has three radio button options: 'Customer Service (Including Warranty Claims)', 'Website Support (For Website Issues and Feedback)', and 'Technical Support (Product Issues)'. The 'Customer Service' option is selected. A 'Next' button is at the bottom of the form.

WEBSITE SUPPORT

- STEP-BY-STEP PASSWORD RESET GUIDE 
- PASSWORD RESET
- CUSTOMER SUPPORT FORM
- CONTACT US



Website support page gives you all your options.

- This User Guide.
- Password Reset Guide.
- Online Customer Service and Product Technical Support.
- Complete Bosch Support Telephone Number Directory.
- Online Website and Product Support Support Options.